

**ELIZABETHTOWN CHURCH OF THE BRETHREN**  
**December 1, 2024, 10:30 a.m.**

Gathering Music *O Come, O Come, Emmanuel*

Welcome

Moment for Meditation *Emmanuel, El Shaddai*  
arranged by Sondra K. Tucker

\*Call to Worship

\*Lighting the Advent Candle of Hope

\*Invocation Prayer

\*Hymn *In Case No One Ever Told You*  
see page 2

Children's Time

Prayer Time

Response Song *Hope is a Candle*  
see page 3

Scripture Isaiah 43:1-7

Sermon "You are a blessing," Luke 1:26-38, Naomi Kraenbring

\*Hymn *For Your Goodness and Your Mercy*

Offering Reflection

Offertory *Simple Gifts*, arranged by Tim and Ryan O'Neill

\*Benediction

Sending Music

**Music Coordinators:** Kim Glass and Rachel Bucher Swank

**Worship Leadership:** Frédérique Green and Amy Carroll

**Bell Choir Director:** Ron Bellamy

**Oboe:** Annika Swank

Welcome, families! Nursery care is available for children up to age 2, and our Shine program cares for children ages 3 through pre-K. Kids' Club, for grades K-3, exits the sanctuary after Children's Time until the end of the worship service.

*\*Please rise as able*

WORDS FOR THE BEGINNING  
**YOU ARE A BLESSING**  
**IN CASE NO ONE  
EVER TOLD YOU**



Scan to hear  
the tune!

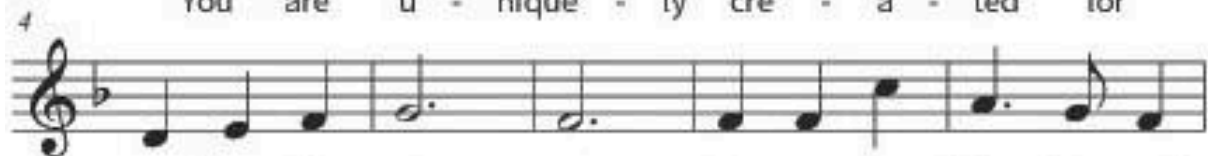
LOBE DEN HERREN ("Praise to the Lord, the Almighty")

Words by Anna Strickland, 2024

Music from the *Praxis Pietatis Melica*, 1668



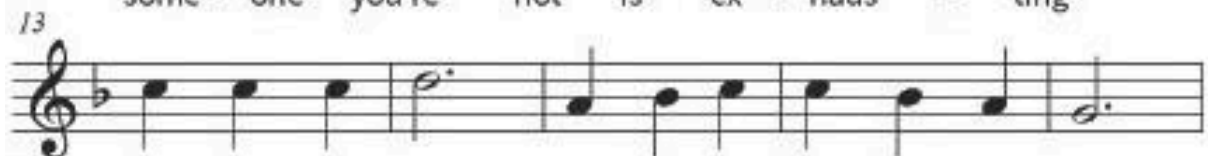
In case no one e - ver told you or  
You are the mas - ter-piece born of God's  
You are u - nique - ly cre - a - ted for



you have for - got - ten You are a bless - ing and  
i - ma - gin - a - tion E - ven the parts that are  
love and be - long - ing For - cing your - self to be



have been since you were be - got - ten  
cry - ing out for res - tor - a - tion  
some - one you're not is ex - haus - ting



Fash - ioned from love Sent to the earth from a - bove  
All that you are Born out of star - dust and scars  
You are a gift There is no box you must fit



You're no - thing short of a god - send  
Re - flects God's per - fect cre - a - tion  
Let your be - lov - ed - ness blos - som

# Hope Is a Candle

GALLOWAY TAM 11.10.11.8



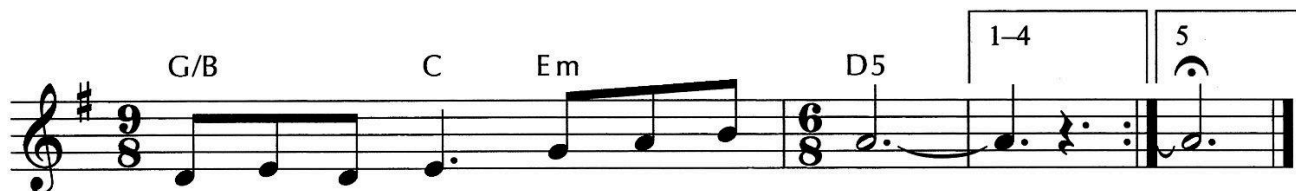
1 Hope is a can - dle, once lit by the proph - ets,  
 2 Peace is a can - dle to show us a path - way,  
 3 Love is a can - dle whose light makes a cir - cle,  
 4 Joy is a can - dle of mys - tery and laugh - ter,  
 5 Christ is the light that the proph - ets a - wait - ed,



nev - er con - sumed, though it burns through the years;  
 threat - ened by gusts from our rage and our greed.  
 where ev - 'ry face is the face of a friend.  
 mys - tery of light that is born in the dark;  
 Christ is the li - on, the lamb, and the child.



dim in the day - light of pow - er and priv' - lege—  
 Friend, feel no en - vy for those in the shad - ows—  
 Wid - en the cir - cle by shar - ing and giv - ing—  
 laugh - ter at hear - ing the voice of an an - gel,  
 Christ is the love and the mys - tery and laugh - ter—

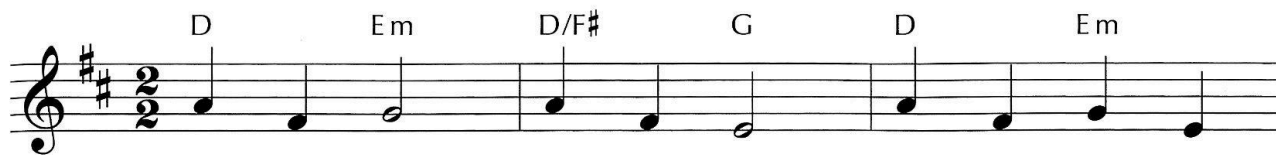


when they are gone, hope will shine on.  
 vio - lence and force their dead - end course.  
 God's ho - ly dare: love ev - 'ry - where.  
 ev - er so near, cast - ing out fear.  
 cand - les, make way! Christ is the day.

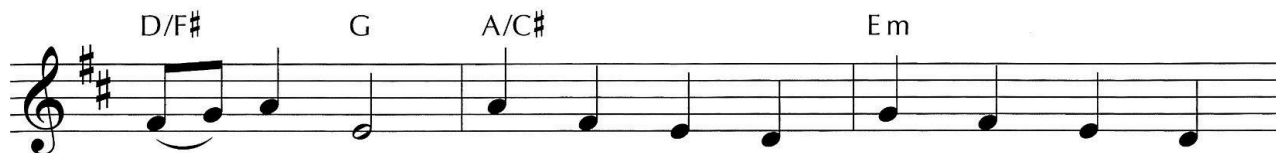
Text: Richard Leach (USA), 1994, © 1995 Selah Publishing Co., Inc.  
 Music: Scottish traditional; acc. James E. Clemens (USA), 2006

# Use Us, God

USE US GOD 6.7.8.5 D



1 Bless our eyes, Je - sus Christ, o - pen them to  
 2 Bless our ears, help us hear cries of those in  
 3 Bless our hands, God a - bove, may they car - ry



see your light. Help us see the ways you're work - ing.  
 doubt and fear. Give us time to hear their sto - ries,  
 out your love. May they reach to all our neigh - bors,

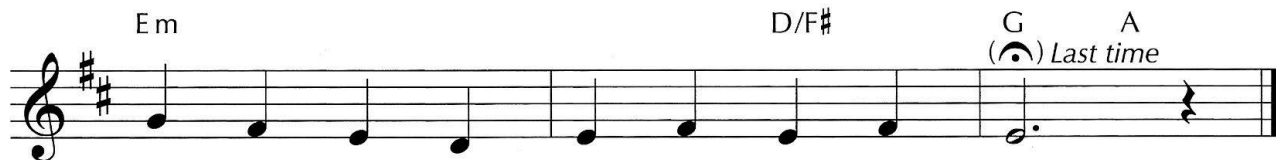
## Refrain



Meet us where we are.  
 let us be your ears. Use us, God, as we go.  
 reach to them in love.



Let us rep - re - sent your love. E - ven though we're



far from per - fect, use us as we go.

Text: Jeremy Kempf (USA)  
 Music: Jeremy Kempf  
 © 2009 Jeremy Kempf